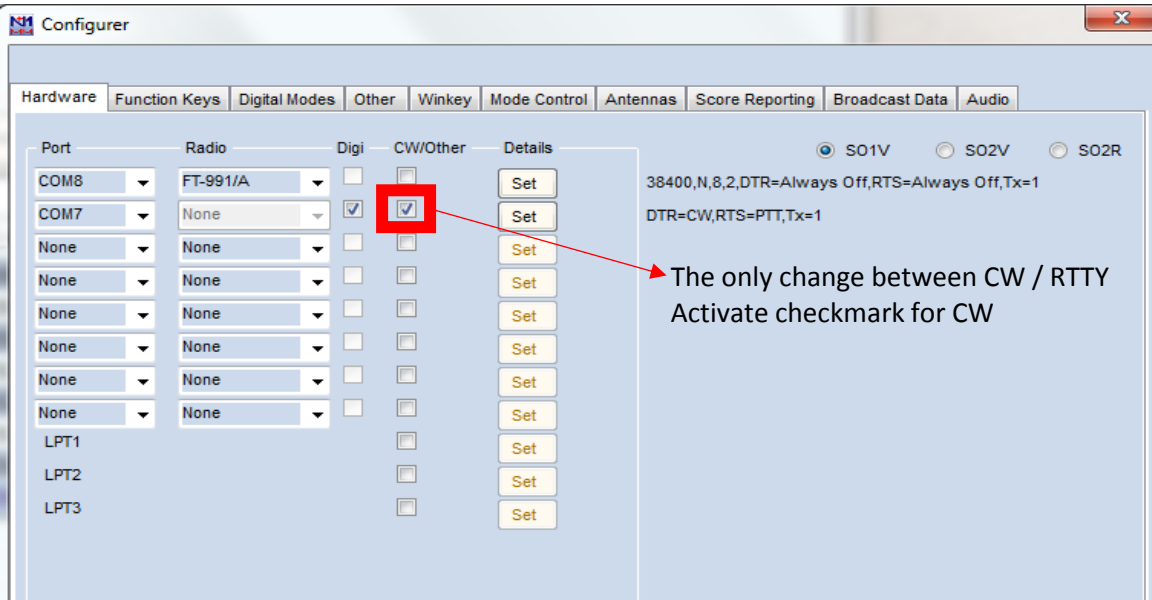


FT-991 Menue Settings
Configuration for CW / RTTY @ NU4E

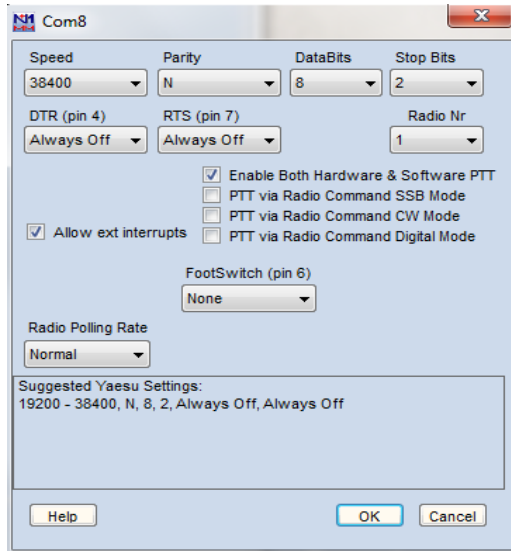
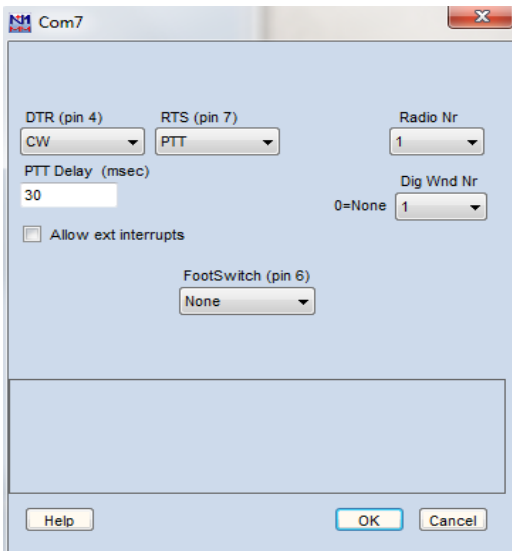
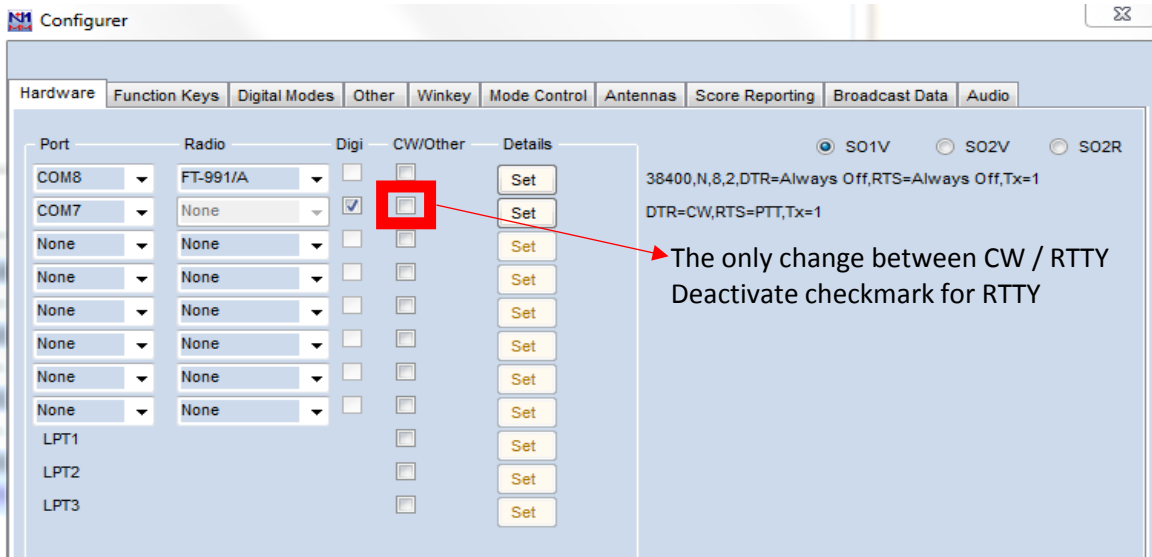
#	Setting	#	Setting	#	Setting	#	Setting
1	300ms	43	OFF	85	ON	127	OFF
2	700ms	44	6dB	86	TN-RN	128	5
3	30000ms	45	MIC	87	xxx	129	10
4	SCOPE	46	50	88	OFF	130	200
5	1sec	47	DAKY	89	1	131	0
6	BLUE	48	DATA	90	DISTANCE	132	2
7	2	49	50	91	mile	133	800
8	8	50	250Hz	92	AUTO	134	0
9	OFF	51	18dB	93	ON	135	1
10	50	52	1200Hz	94	300Hz	136	2100
11	50	53	18dB	95	18dB	137	0
12	ELEKEY-B	54	50	96	300Hz	138	1
13	REV	55	OFF	97	18dB	139	100
14	3.0	56	SEMI	98	RTS	140	100
15	OFF	57	250ms	99	NOR	141	50
16	1290	58	4ms	100	NOR	142	50
17	1	59	PITCH OFFSET	101	50	143	INTERNAL
18	1	60	DTR	102	170Hz	144	MIC
19	TEXT	61	15ms	103	2125Hz	145	50
20	TEXT	62	PSK	104	100Hz	146	500ms
21	TEXT	63	1000Hz	105	6dB	147	50
22	TEXT	64	0Hz	106	3000Hz	148	50
23	3ms	65	0Hz	107	6dB	149	100ms
24	30dB	66	300Hz	108	MIC	150	0
25	4	67	18dB	109	50	151	DISABLE
26	00:00	68	3000Hz	110	RTS	152	MANUAL
27	00:00	69	18dB	111	DATA	153	146.500.00
28	GPS1	70	REAR	112	300-2700	154	HISTORY
29	38400bps	71	RTS	113	MEDIUM		
30	1000ms	72	DATA	114	-15		
31	38400bps	73	50	115	10		
32	1000ms	74	MIC	116	WIDE		
33	DISABLE	75	50	117	SPECTRUM		
34	DISABLE	76	DAKY	118	OFF		
35	5khz	77	DATA	119	4kHz/sec		
36	OFF	78	50	120	100kHz		
37	ENABLE	79	1200	121	OFF		
38	TIME	80	100khz	122	5		
39	0	81	1000khz	123	10		
40	RX	82	600khz	124	OFF		
41	OFF	83	5000khz	125	5		
42	6dB	84	ON	126	10		

Changed

N1MM+ CW Settings



N1MM+ RTTY Settings



N1MM+ MMTTY Settings

Setup Ver1.70K

Demodulator | AFC/ATC/PLL | Decode | TX | Font/Window | Misc | SoundCard

DIDDLE

NONE
 BLK
 LTR

Random
 WaitTimer

TX

UOS Digital Output

Double shift

Disable Wait

Disable Rev

Always fix shift

Char. Wait Diddle Wait

PTT & FSK

Port **EXTFSK64**

Invert Logic

Radio command

TxBPF/TxLPF

Tx BPF Tap **48** f

Tx LPF Freq **100** Hz

Radio command

Port definition

Port **NONE** Baud **38400** Char. wait **0** ms

Data length: 7bits 8bits

Stop: 1bit 2bits

Parity: None Even Odd

flow control: XON/XOFF CTS

DTR/RTS: PTT

Commands

Init:

Rx: **TX0;**

Tx: **TX1;\w10**

Model: **NONE** Polling interval **1** secs

Frequency offset: OFF LSB USB

Group: **Yaesu FT 9000, 2000, 991, 891, 950, 45** Load Save ? OK Cancel

EXTFSK 2.0e

Port **COM7** Status: OK

FSK output

TXD
 RTS
 DTR

PTT output

TXD
 RTS
 DTR

Inv. FSK Inv. PTT **45 baud**

```

PTT ON
08 02 1F 0E 17 04 0E 17
04 10 01 05
PTT OFF
    
```

N1MM+ MMTTY Settings

Setup Ver1.70K

Demodulator | AFC/ATC/PLL | Decode | TX | Font/Window | Misc | SoundCard

Sound Card

FIFO
RX 12 TX 4

Priority
 Normal Highest
 Higher Critical

Device Identifiers
RX 0 TX 0

Source
 Mono Right
 Left

Clock
11025 Hz Adj
0.00 Hz
Tx offset

Setup always on top

Sound loopback
 OFF
 Int.
 Ext.(SAT)

Tx Port
 Sound
 Sound + COM-TxD (FSK)
 COM-TxD(FSK) **USB Port**

System Font
Window Times New Roman Set 0
Fixed pitch Courier New Set 0
Japanese English

HAM Set Default(Demodulator) ? OK Cancel

USB Port Option

Processing method

A: Normal
 B: Polling
 C: Limiting speed
 D: Polling and Limiting speed

Please try to test B, C, D, if you have a trouble in the USB-COM adaptor. (C)Limiting speed seems to be well.

OK Cancel

N1MM+ MMTTY Settings

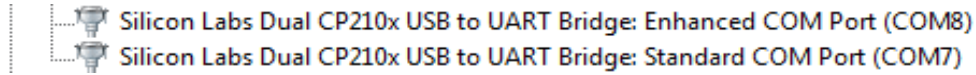
Setup Ver1.70K

Demodulator | AFC/ATC/PLL | Decode | TX | Font/Window | Misc | SoundCard

Reception
 Mikrofon (USB Audio CODEC)
 Microphone Array (Realtek High

Transmission
 Lautsprecher (USB Audio CODEC)
 Speakers / Headphones (Realtek

Windows Device Manager



Remarks

After many hours trying to setup RTTY I finally made a reset and started with a clean menu and some tips from DC2VE and DJ9MH. Thanks for your help!

Just activate or deactivate the checkmark "CW/Other" for CW or RTTY and you're good to go RTTY or CW and CAT with the FT-991 and just one USB cable
I lost the rest of my FT-991 settings and I'll update it when they are needed again

Hope these settings are helpful for someone, if you find failures or have suggestions please let me know

Matt - DJ8OG - NU4E

Last modified: 07.10.2018